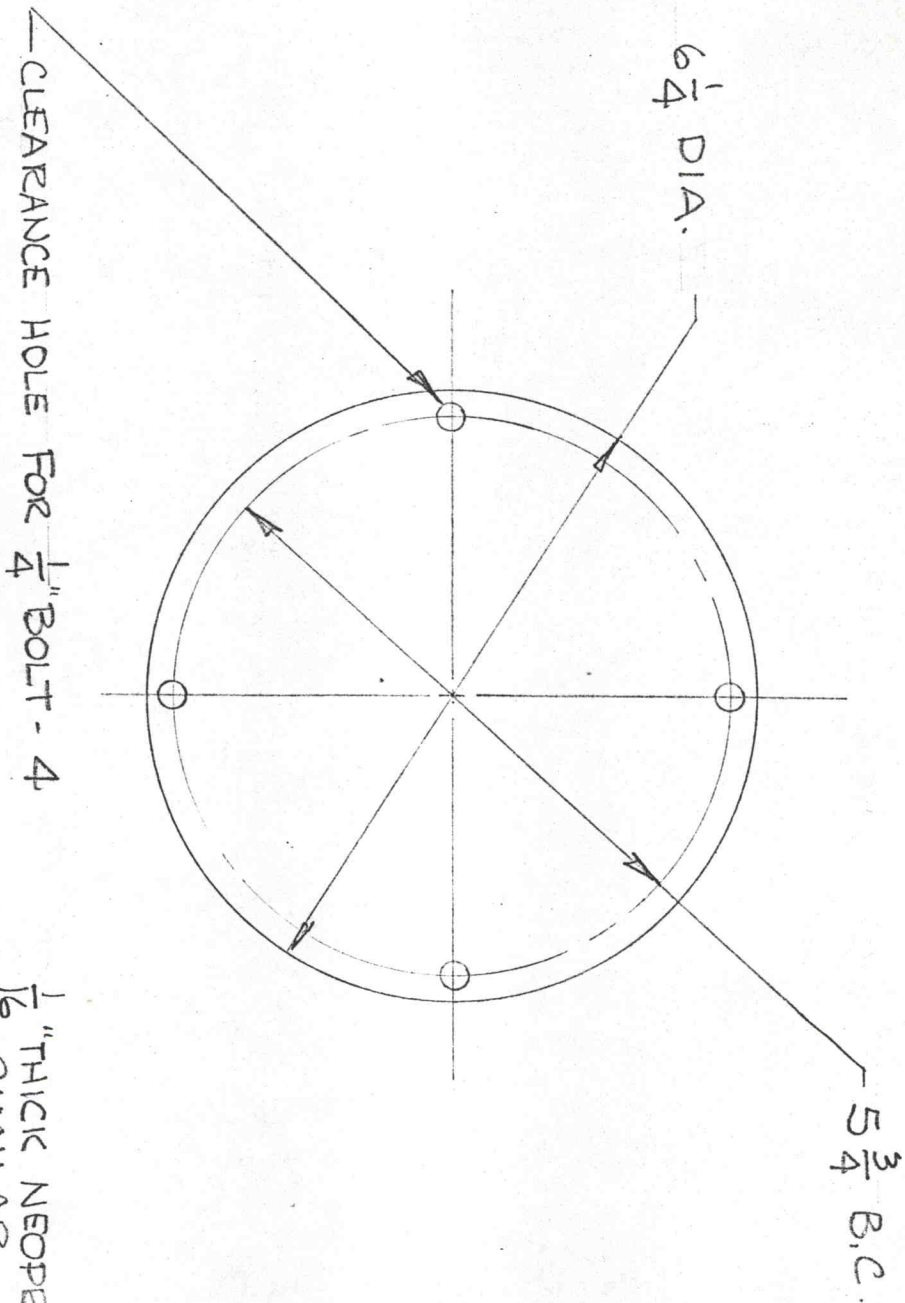


① BASE PLATE
 C.R.S.
 HALF SIZE

1 REQ'D.
 6-18-74



$\frac{1}{16}$ " THICK NEOPRENE OR
 SIMILAR

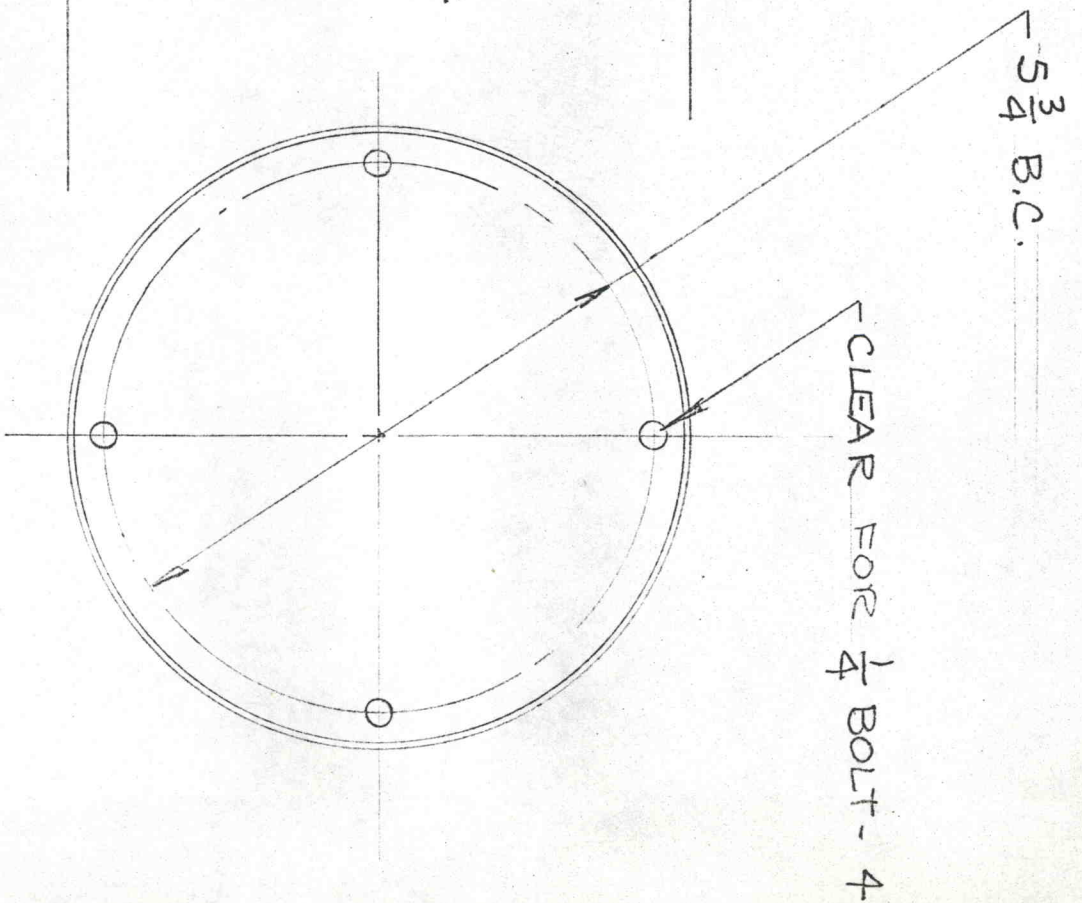
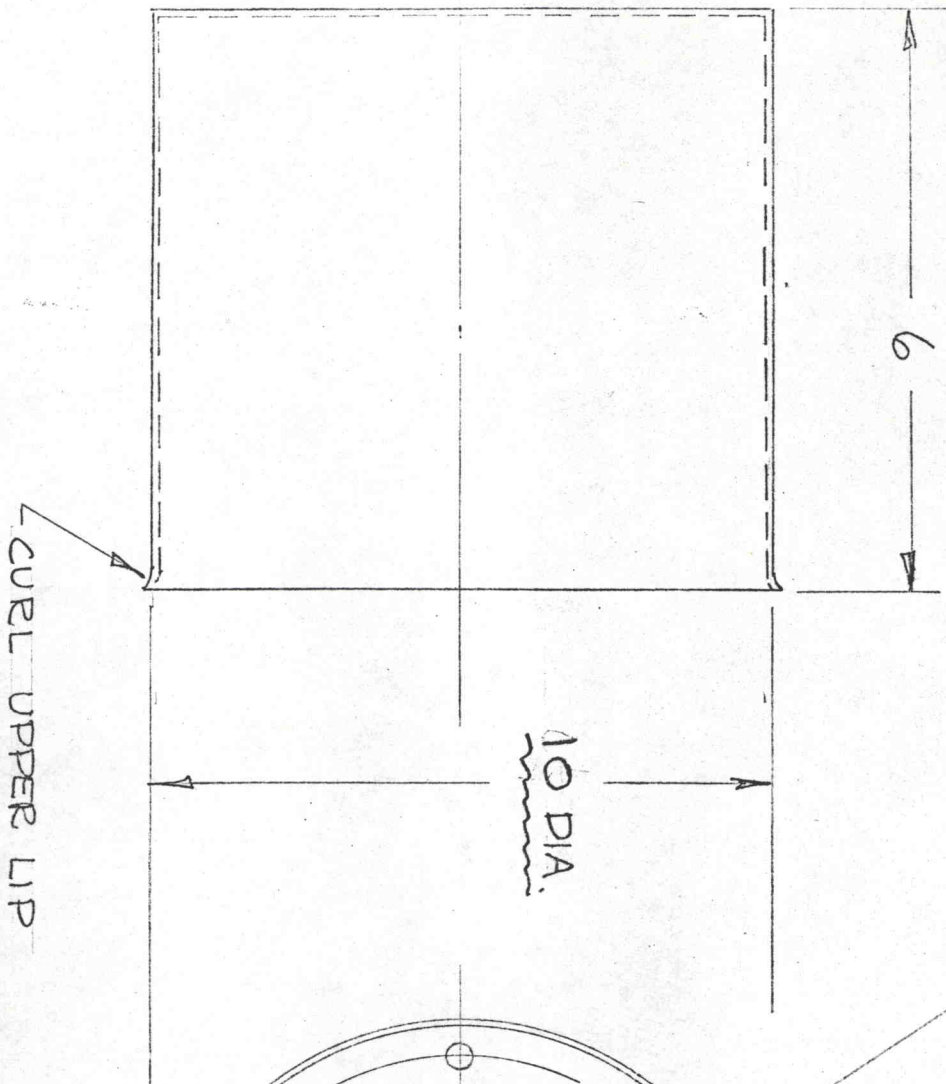
2

GASKET

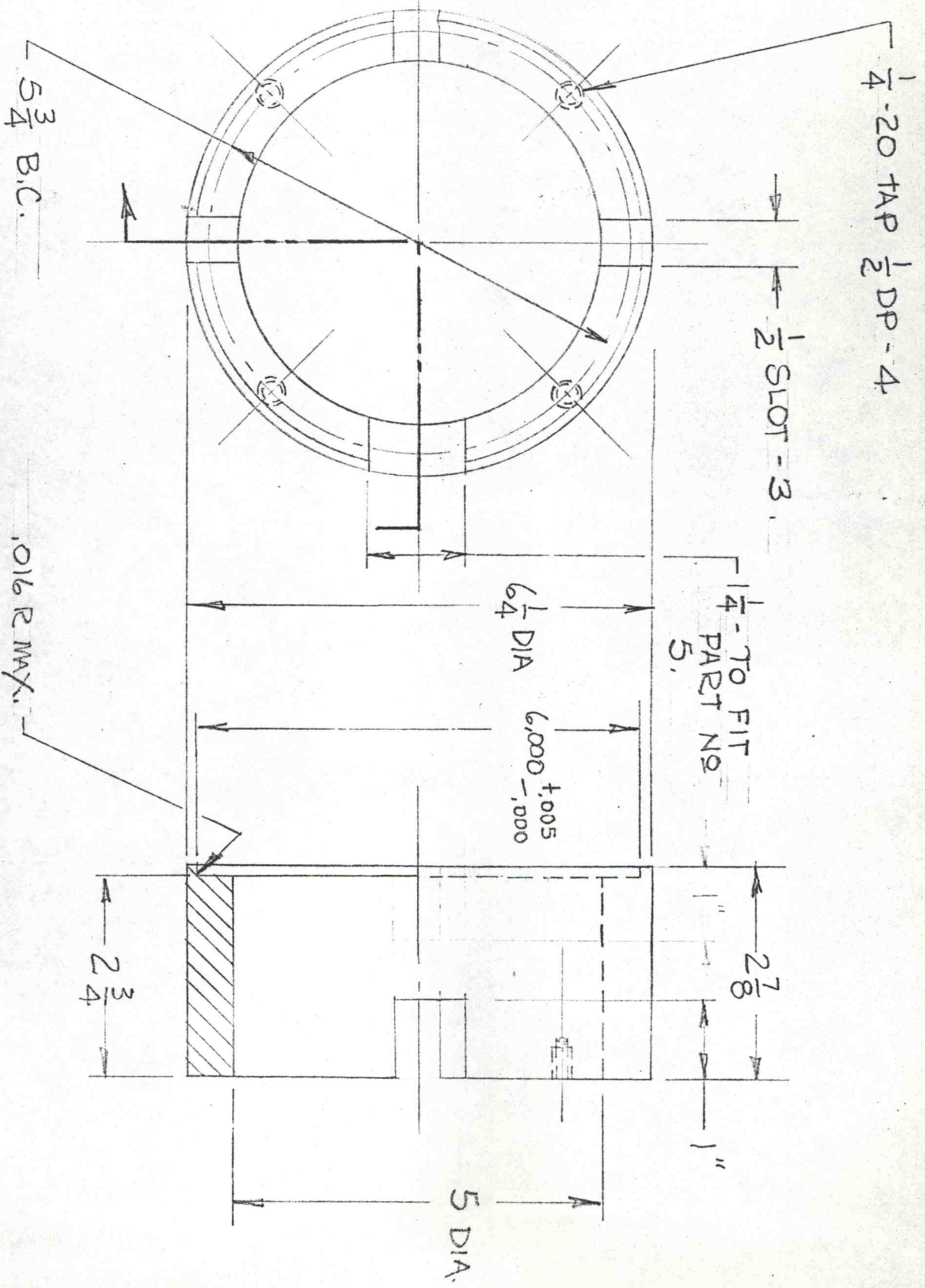
1 REQ'D.

HALF SIZE

6-18-74



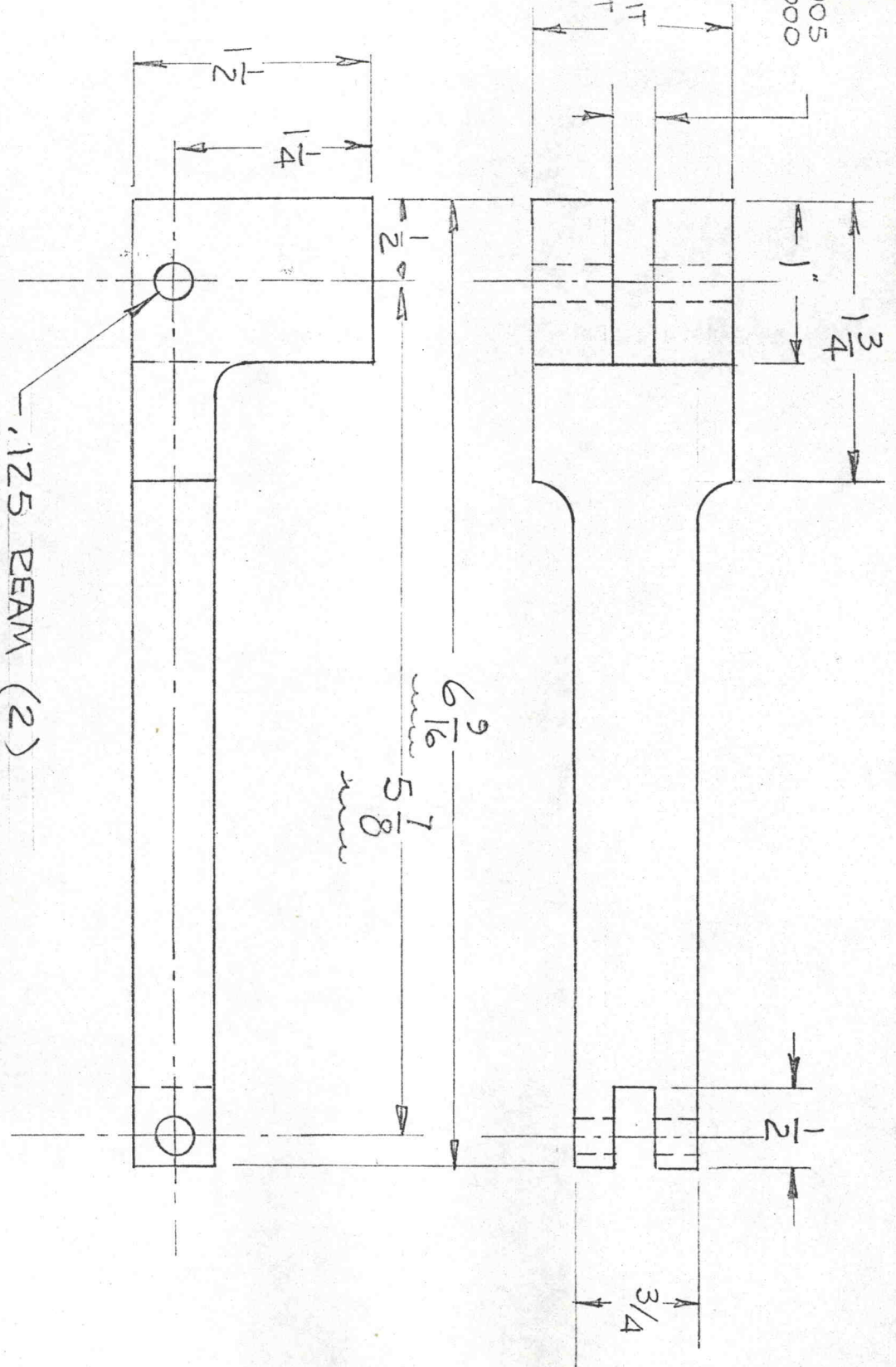
③ TANK
 1/2 GA. SHEET STEEL
 HALF SIZE
 REQ'D.
 6-18-74



④ BASE CYLINDER 1 REQ'D
 STAINLESS STEEL
 HALF SIZE 6-18-74

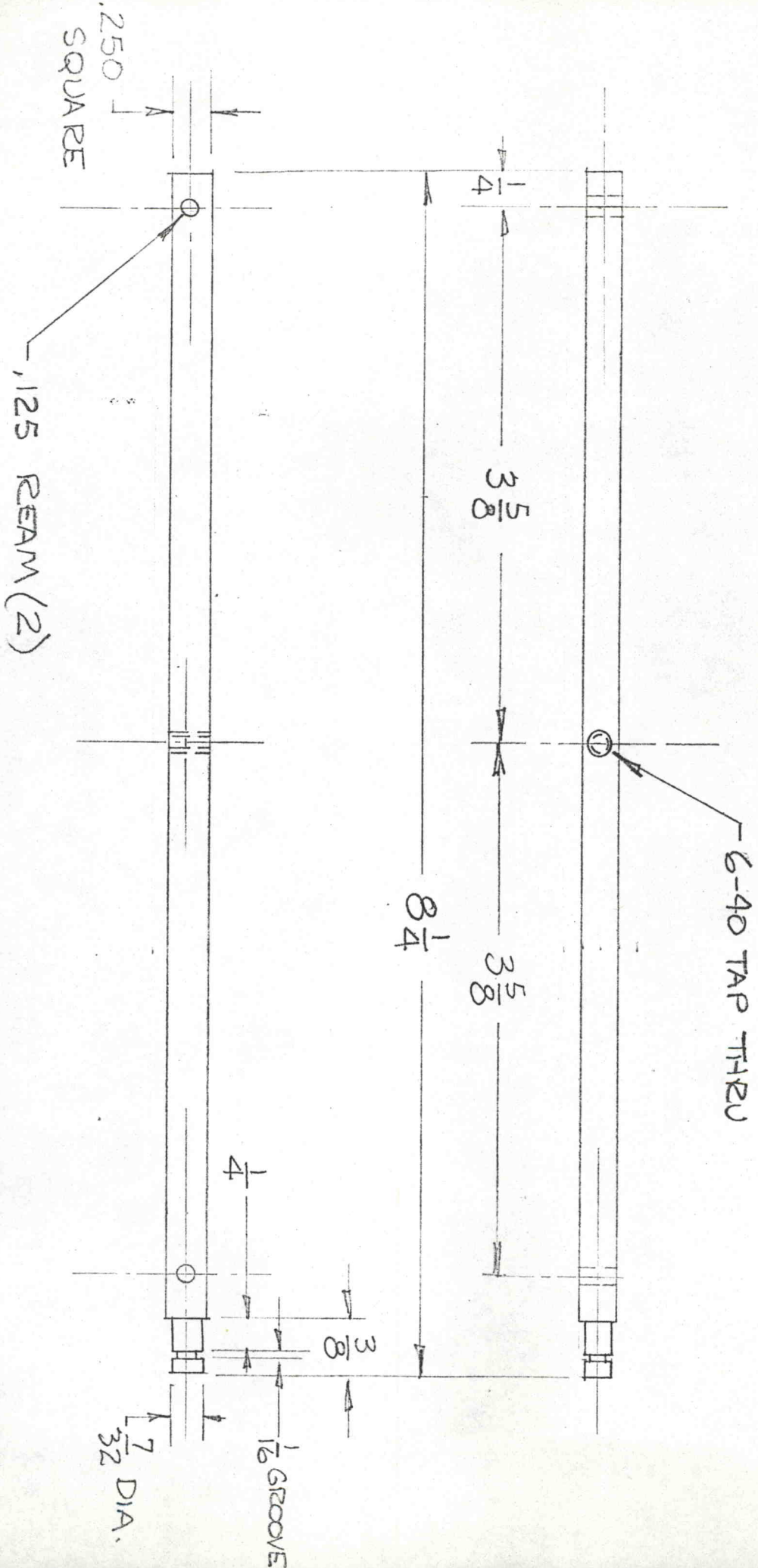
.250 \pm .005

1/4 - TO FIT
PART
NO. 4.

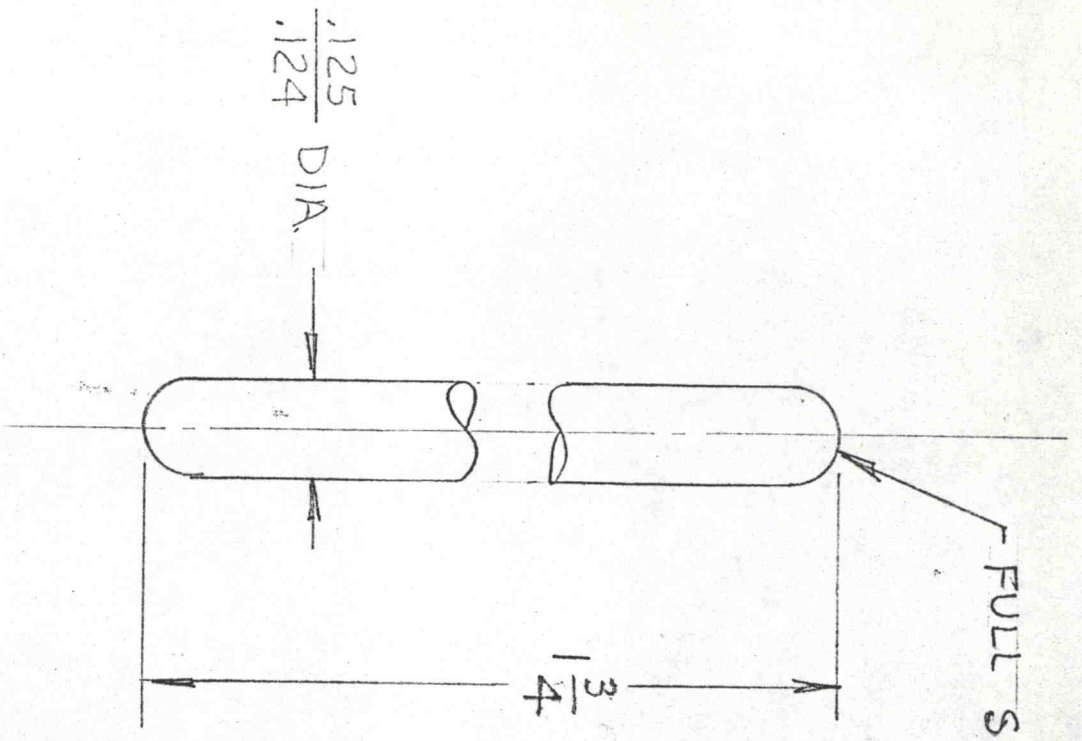


NOTE:
THIS PART TO BE FITTED
TO BASE CYL - PART 4 - WITH
SCREWS AS AVAILABLE

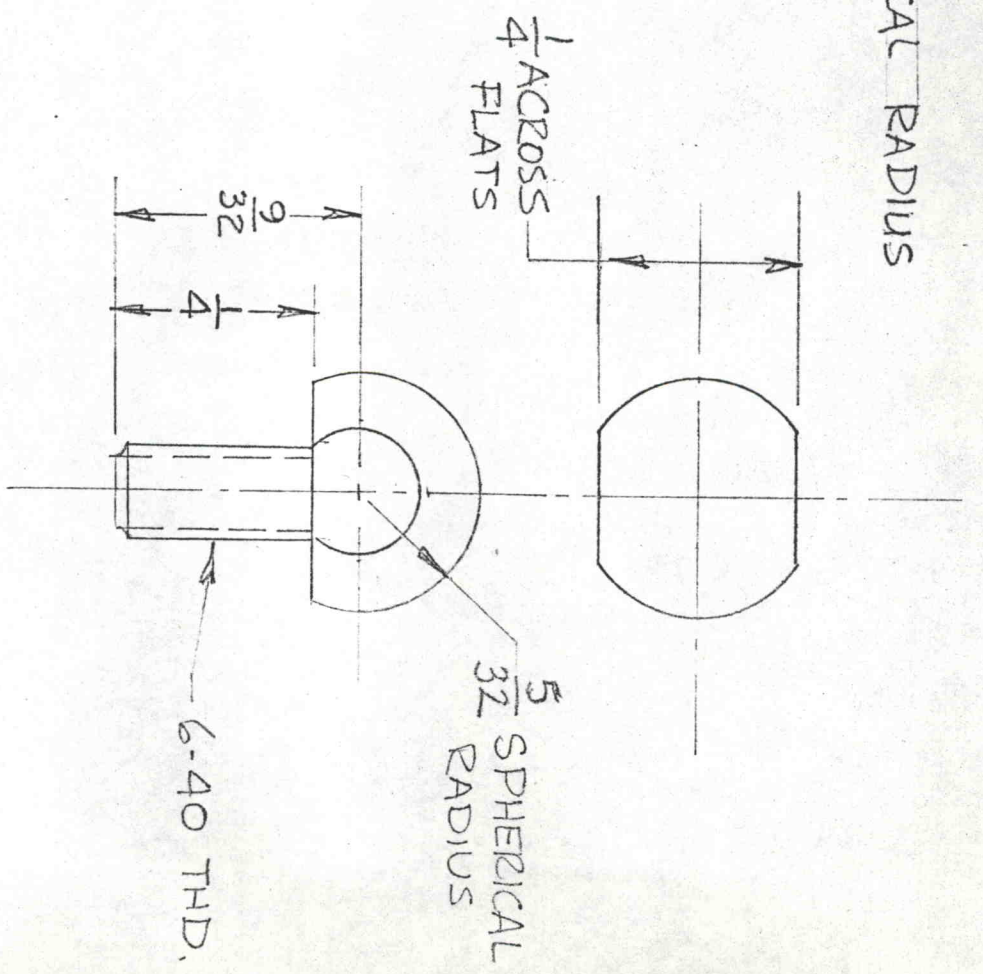
⑤ LEVER BRACKET
STAINLESS STEEL
FULL SIZE
1 REQ'D
6-18-74



⑥ GAGE LEVER 1 REQ'D
 STAINLESS STEEL
 FULL SIZE 6-18-74

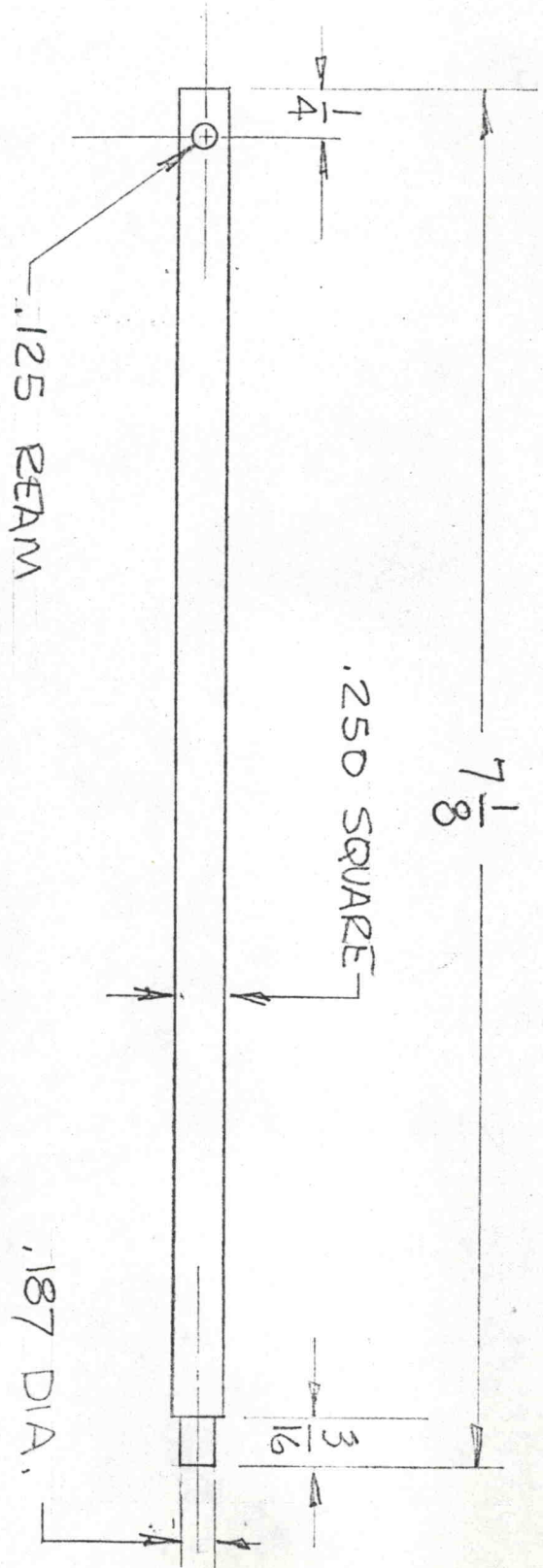


8 STYLUS - UPPER
 STAINLESS STEEL
 4 X SIZE
 1 REQ'D

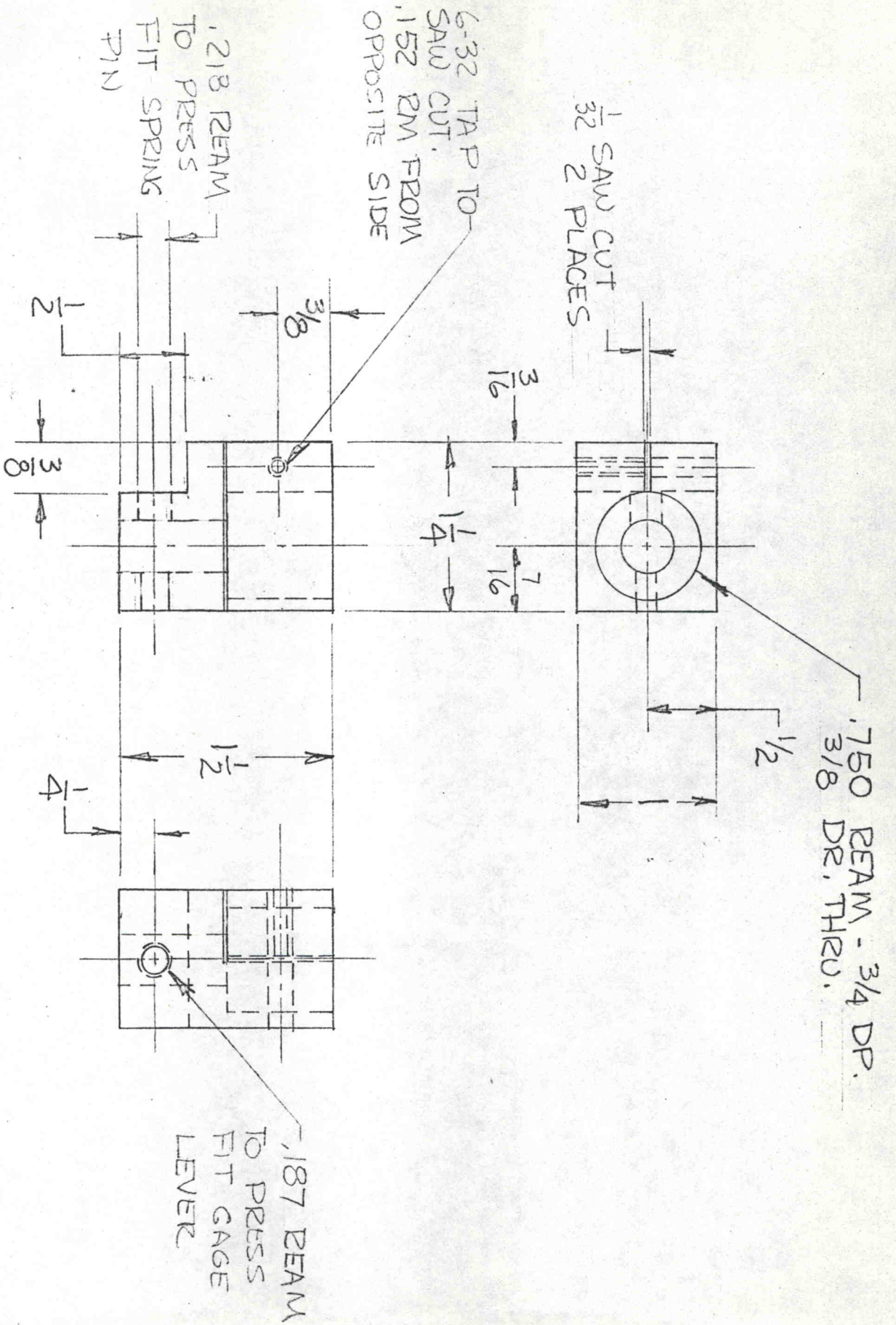


7 STYLUS - LOWER
 STAINLESS STEEL
 4 X SIZE
 1 REQ'D
 6-21-74

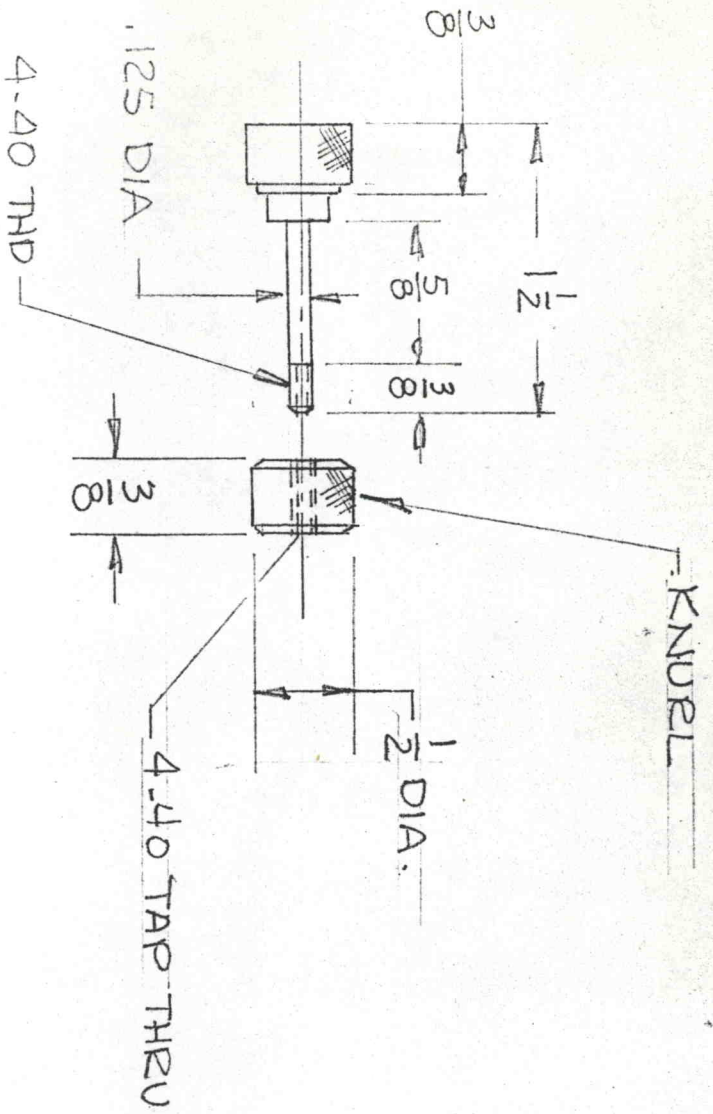
NOTE: PRESS-FIT TO LVDT BRKT.



- ⑨ GAGE LEVER-UPPER
STAINLESS STEEL
FULL SIZE
- 1 REQ'D.
6-21-74

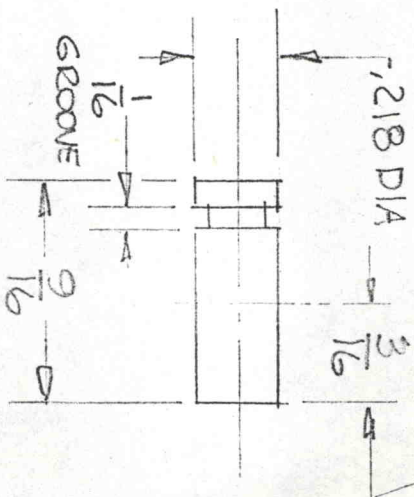


⑩ LVDT BRKT ALUMINUM FULL SIZE 1 REQD 6-21-74



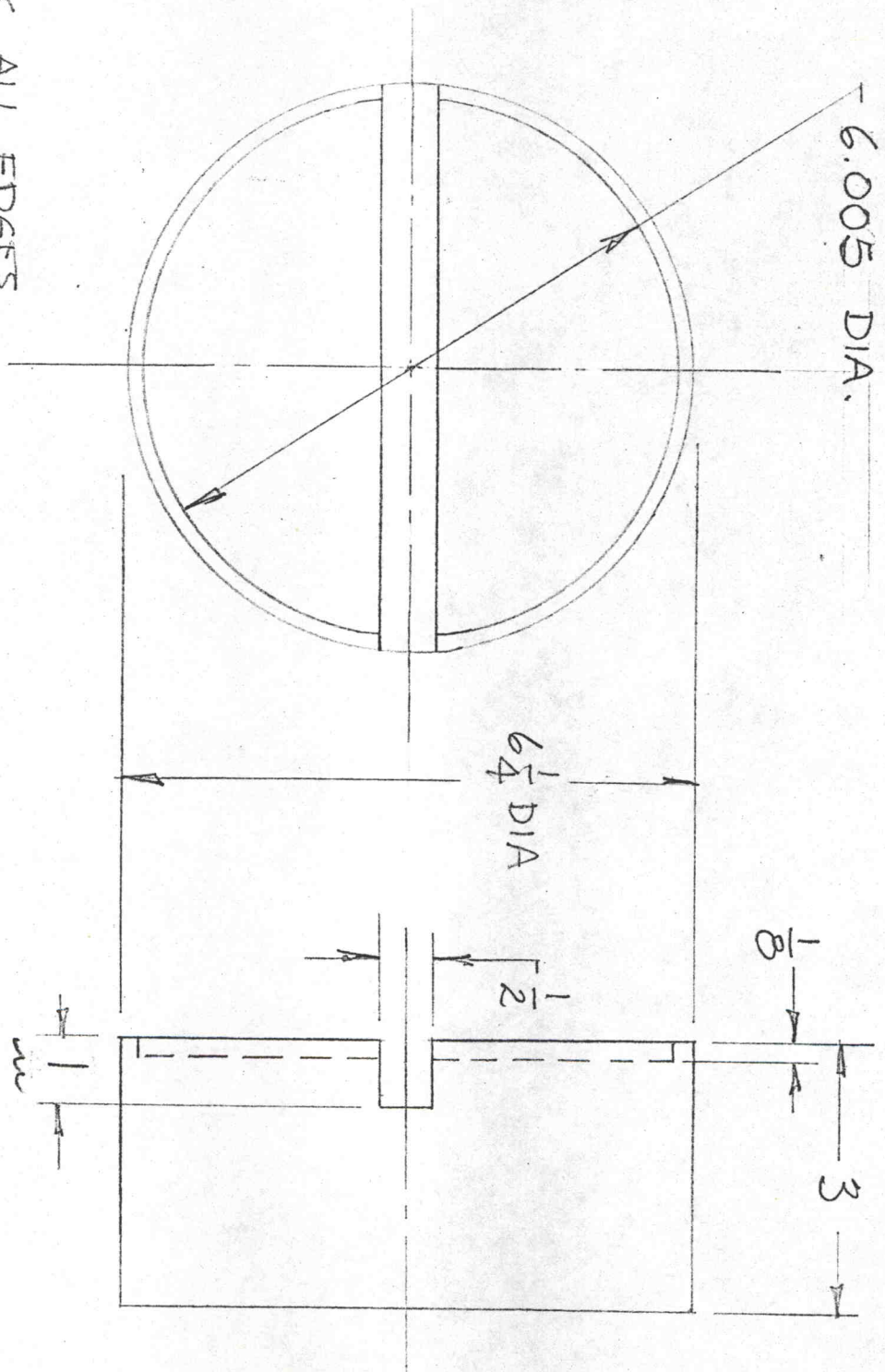
⑫ LEVER PIN ASSY
 STAINLESS STEEL
 FULL SIZE
 1 REQ'D

PRESS TO LVDT
 BRKT THIS LGTH.



⑪ SPRING PIN
 ALUMINUM
 2 X SIZE
 1 REQ'D
 6-21-74

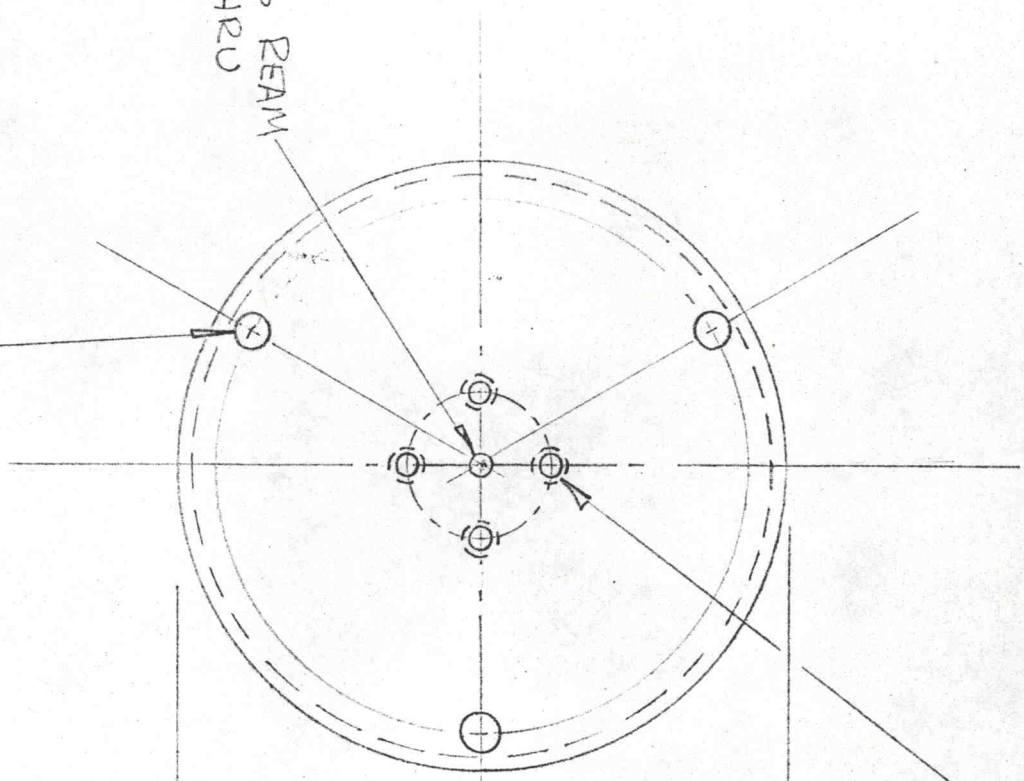
BREAK ALL EDGES
 $\frac{1}{32} \times 45^\circ$



⑬ TOP PLATE 1 REQ'D.
C.P.S. - BLACK OXIDE
HALF SIZE
6-21-74

.375 BEAM WITH
CYLINDER PLATE

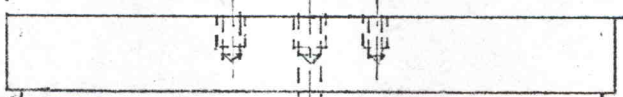
.126 BEAM
THRU



10-32 TAP
3/8 DP - 4

6 1/4 DIA.

1.50 B.C.



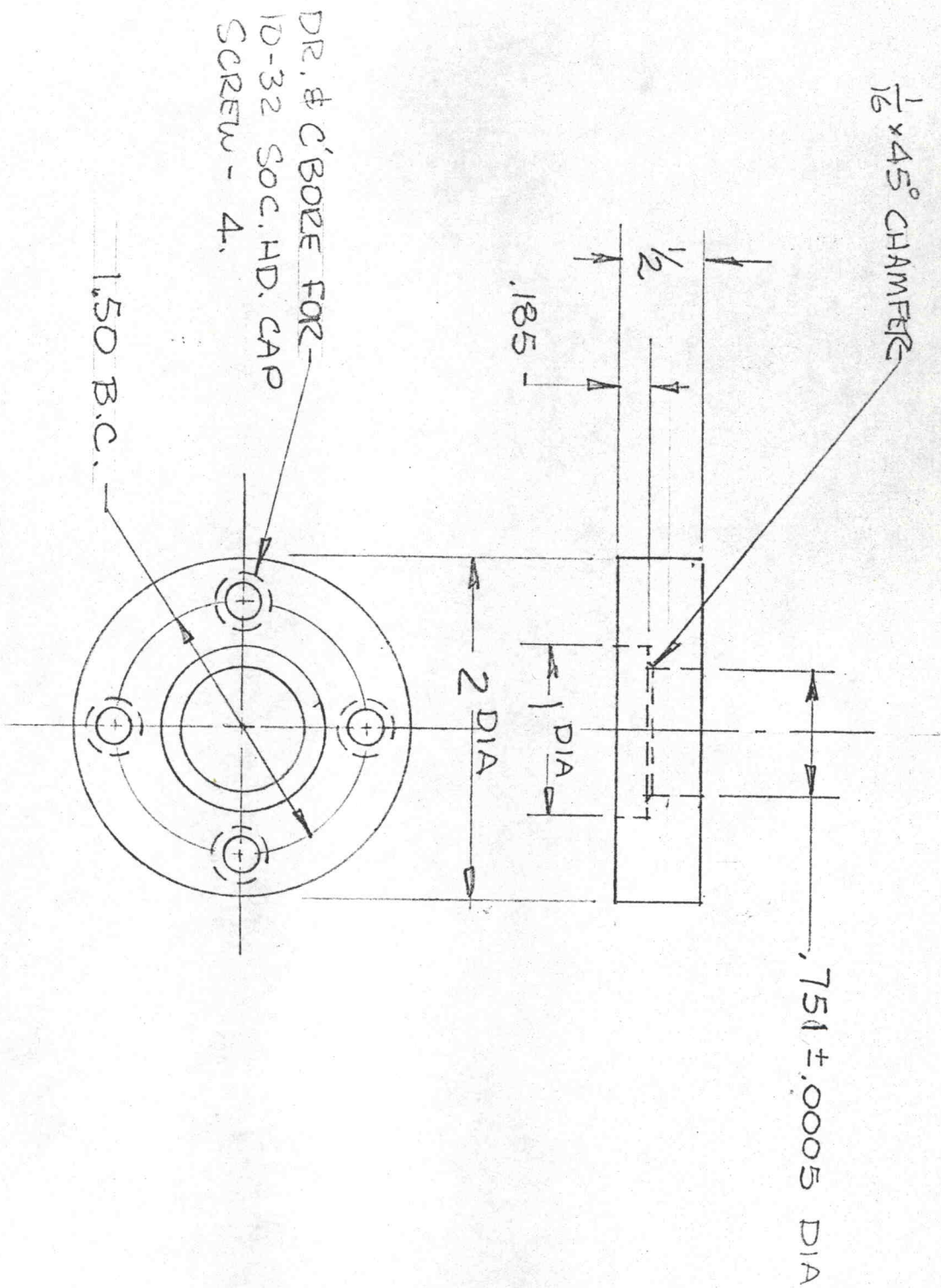
1
5/32

6.000 DIA

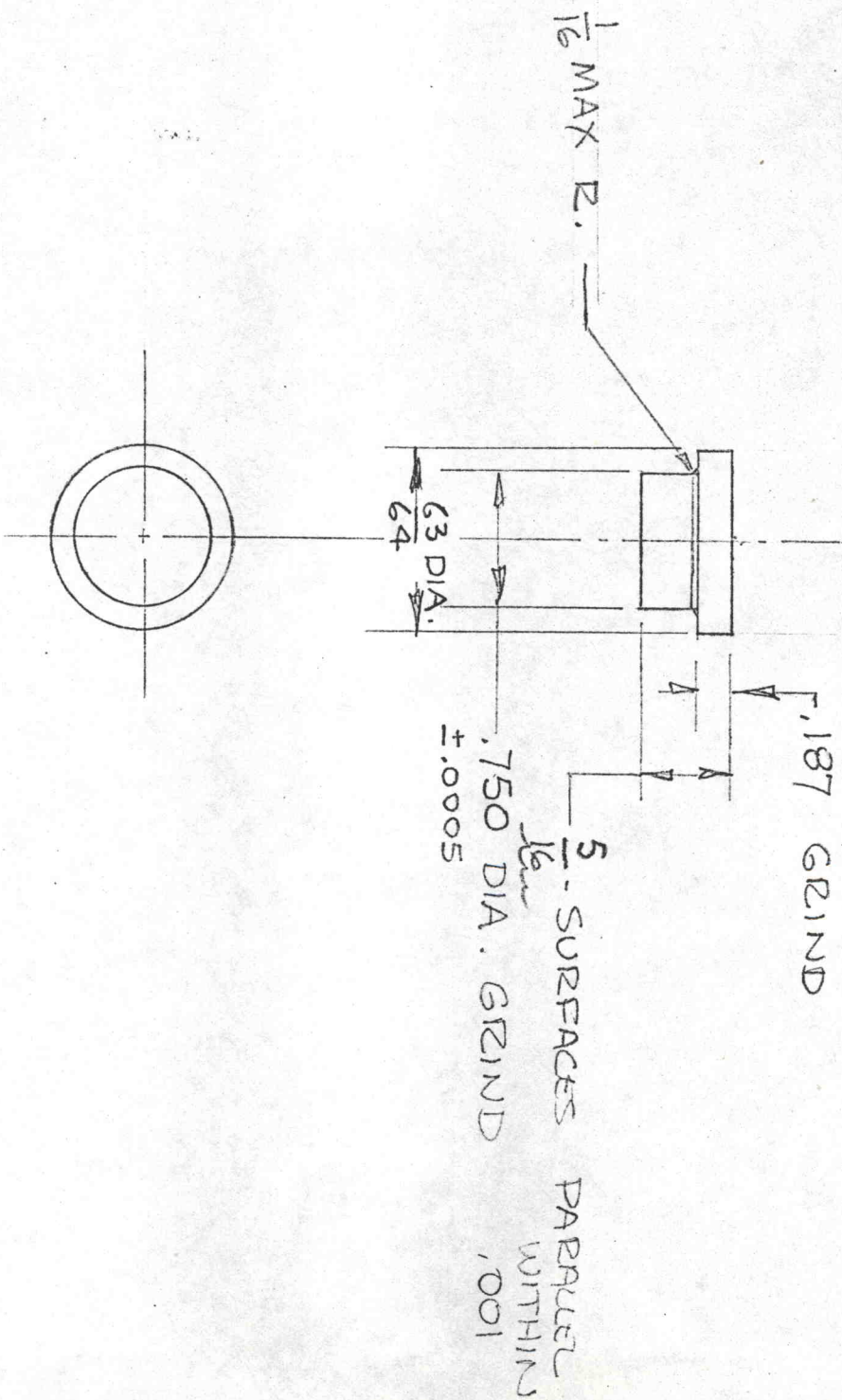
1/16 x 45° CHAMFER

14

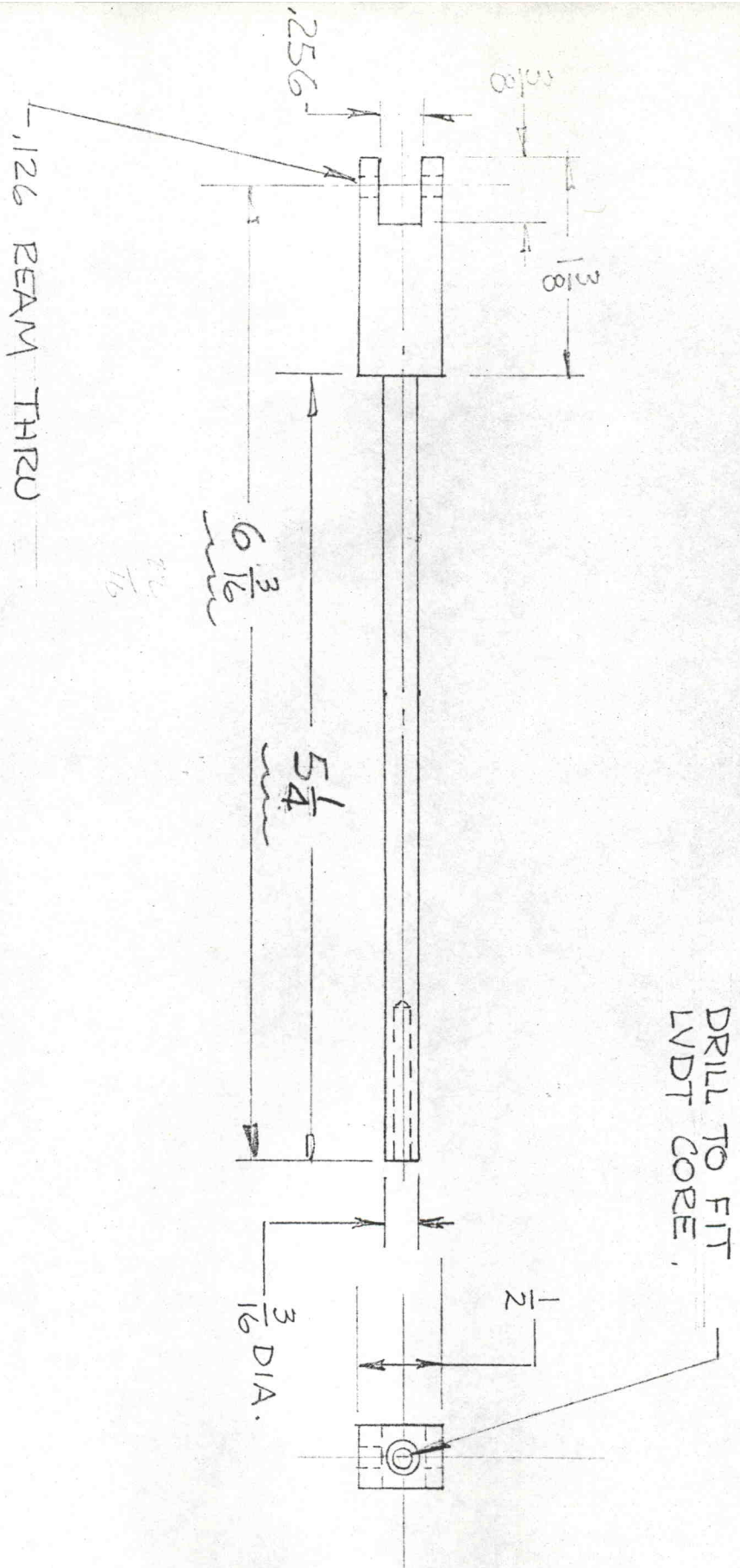
COMPRESSION PLATE 1 REQD.
CARBON STEEL - BLK. OXIDE
HALF SIZE 6-21-74



15 PAD HOLDER 1 REQ'D
 STAINLESS STL.
 FULL SIZE
 6-21-74



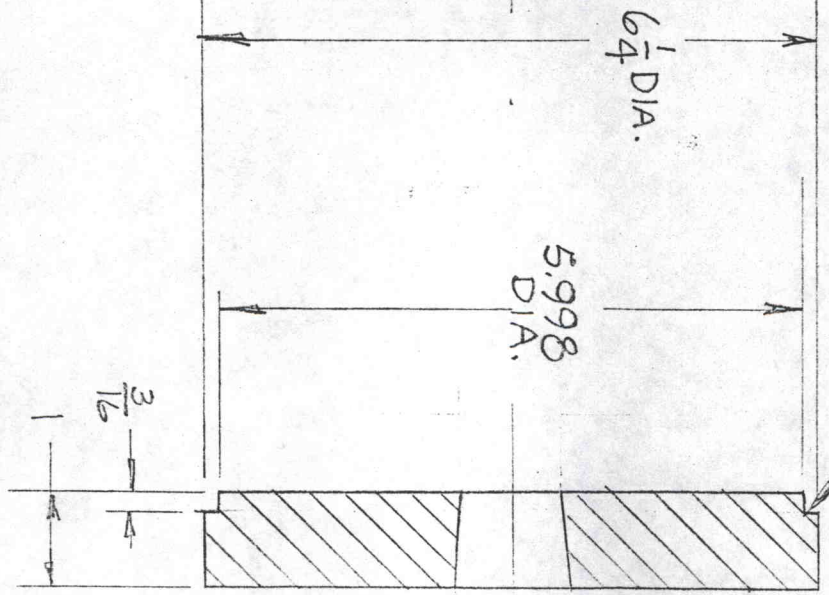
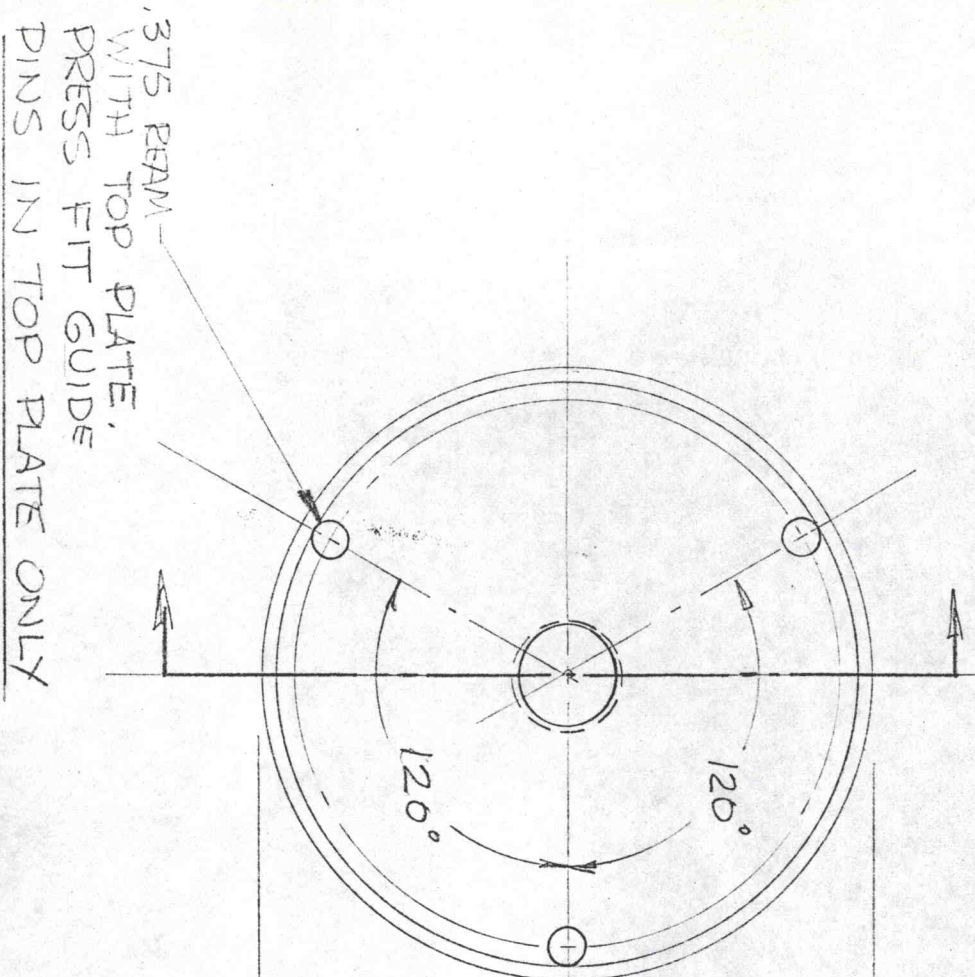
①6 COMPRESSION PAD 1 REQ'D
 SOLAR STEEL 50 R.
 FULL SIZE
 6-21-74



(17) LVDT EXTENSION
 STAINLESS STEEL
 FULL SIZE
 1 REQ'D.
 6-21-74

NOTE A. WATER QUENCH FROM 1550°F
 DRAW TO 600°F, R_e 40.
 GRIND A TO 1.100

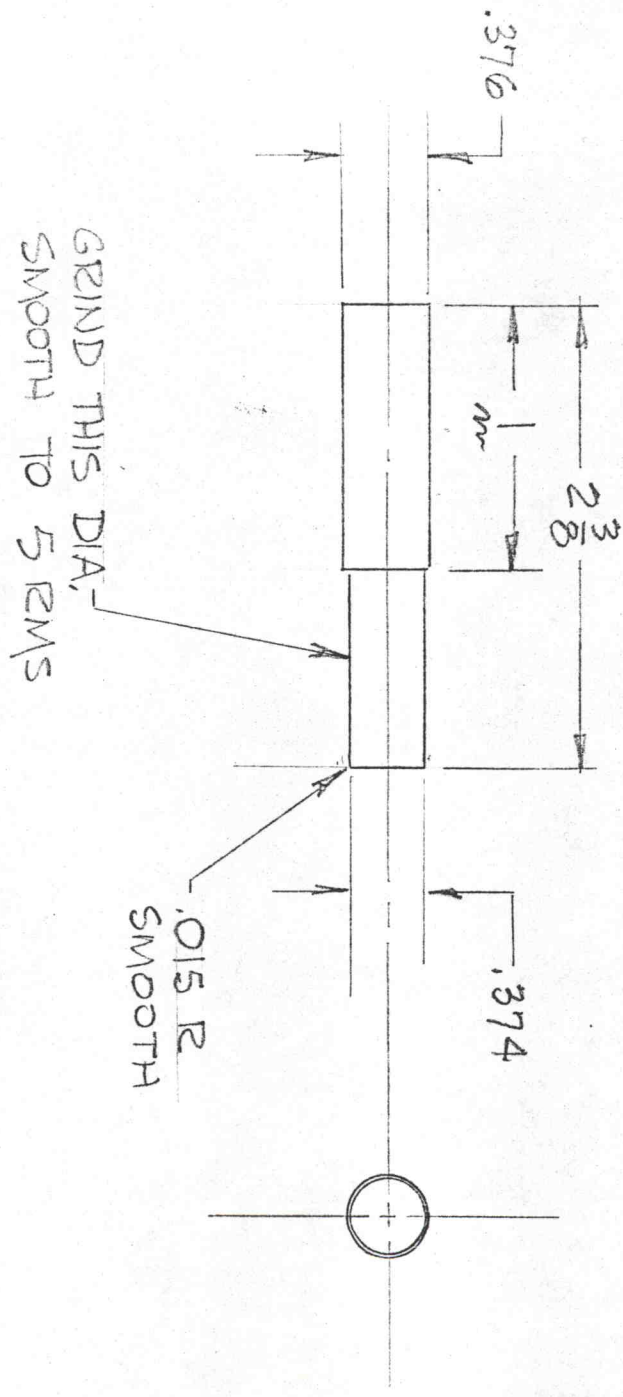
NOTE B. INSERT COLLAR AND
 APPLY 40,000 LBS. FORCE,
 GRIND A TO FINAL DIM.



1/4" TAPER
 PER FOOT.
 DOUBLE
 ANGLE:
 (5° 49')

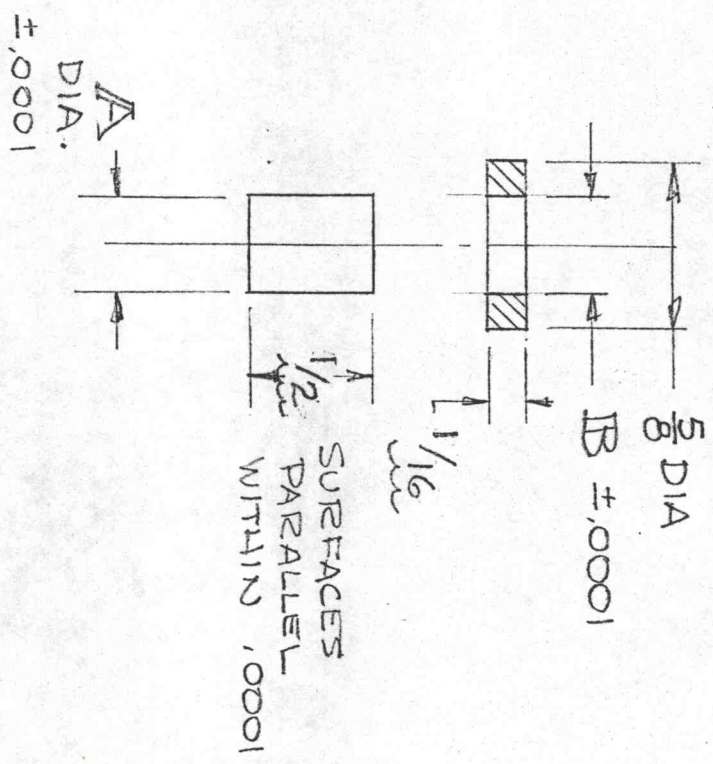
A-A
 1.124
 FINAL.
 SEE NOTES
 A & B.

18 CYLINDER PLATE 1 REQ'D.
 SOLAR STEEL
 HALF SIZE 6-21-74



①9 GUIDE PIN
 SAE 1036
 FULL SIZE

3 REQ'D.
 6-21-74



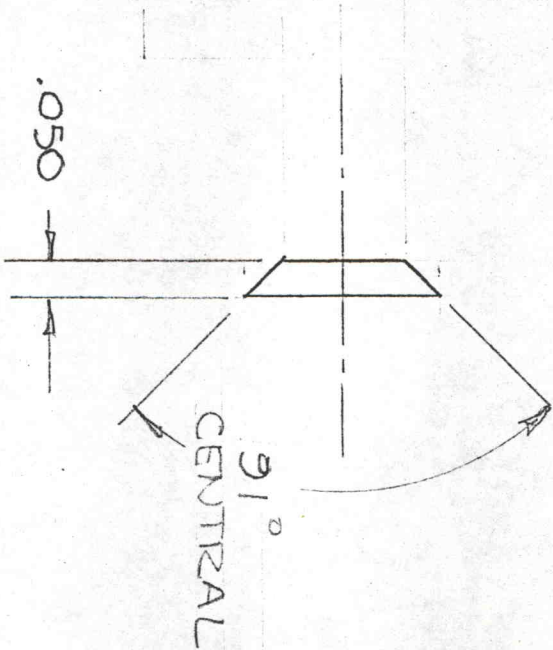
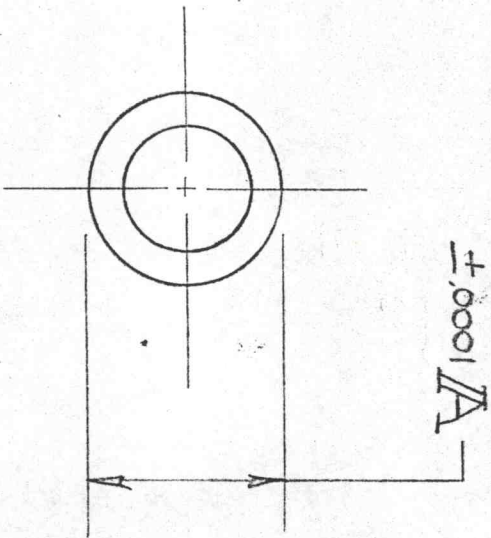
(20) PLUG
 901 CARBOLLOY OR EQUIV.
 TWICE SIZE

(21) PLUG RING
 CARBON STEEL - 1036
 TWICE SIZE

PRESS FIT PLUG RING
 FLUSH WITH TOP OF
 PLUG.

A	B	REQ'D
.250	.2495	2
.265	.2645	6

IN.	NO. REQ'D
.265	6
.250	2



22

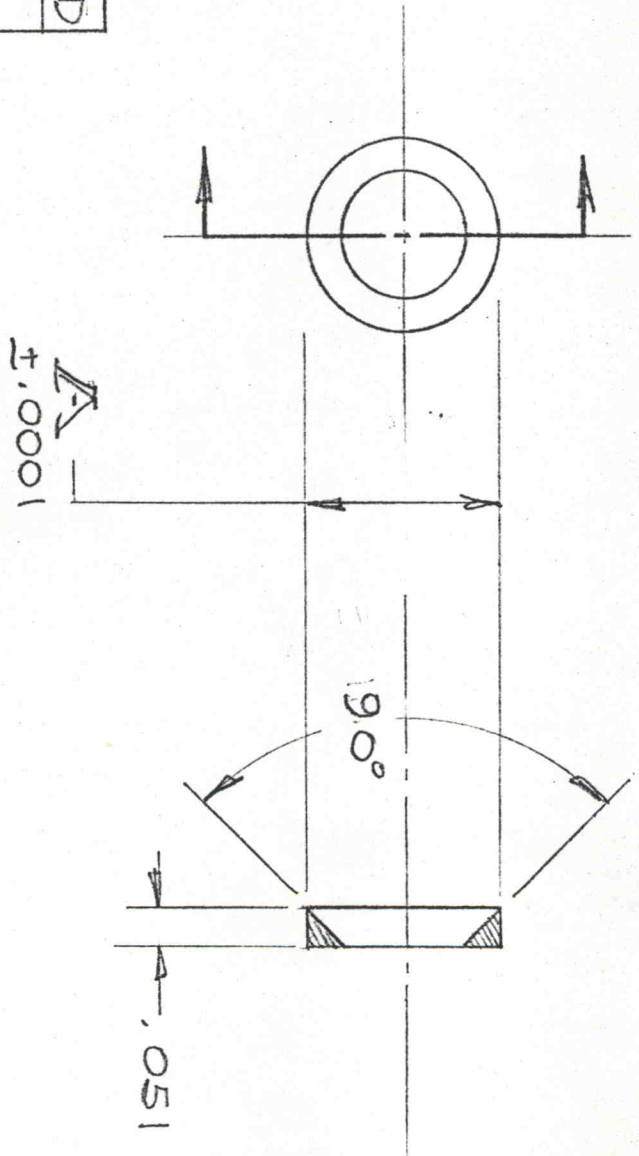
PACKING DISC

SAE 52100
4 X SIZE

65 R_c

6-24-74

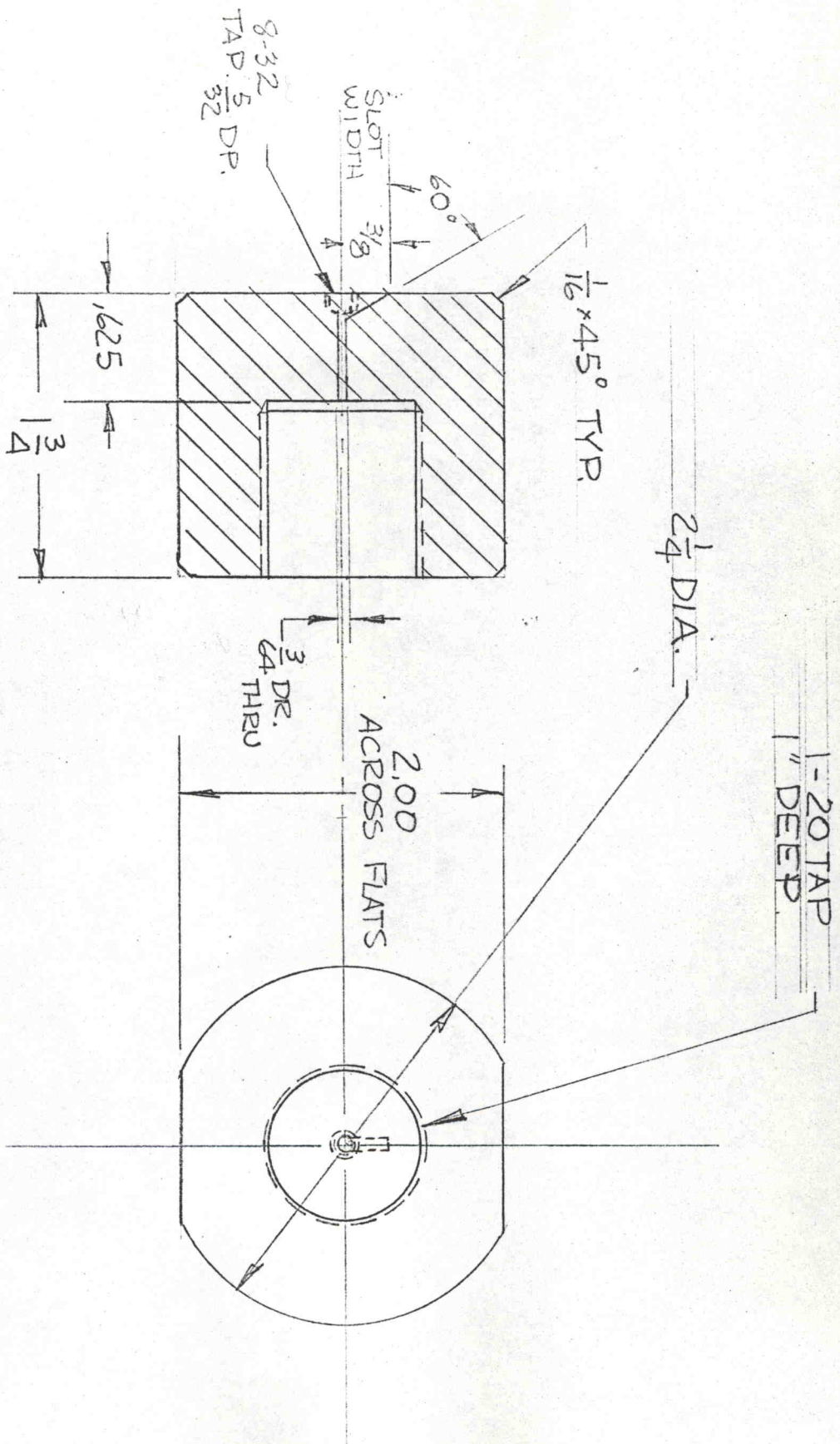
A	NO. REQ'D
.265	12
.250	4



23

PACKING RING

SAE 6150 35 Rc
4 X SIZE 6-24-74



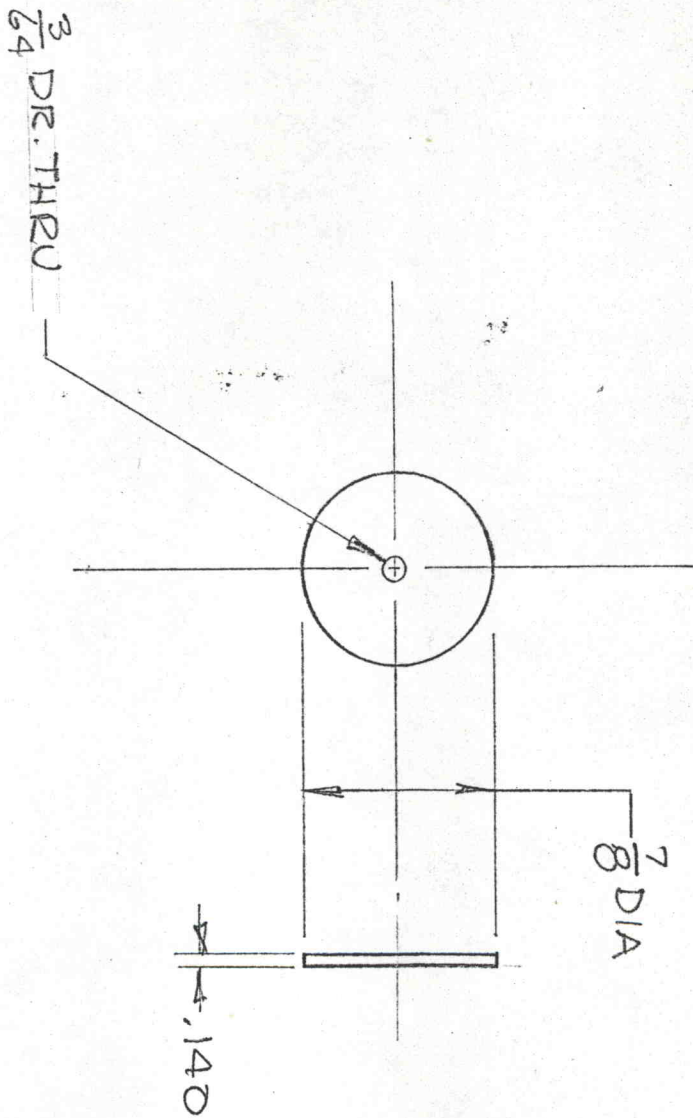
HEAT TREAT TO 1700°F,
OIL QUENCH & DRAW TO
800°F.

24

SCREW CAP
SAE 6150
FULL SIZE

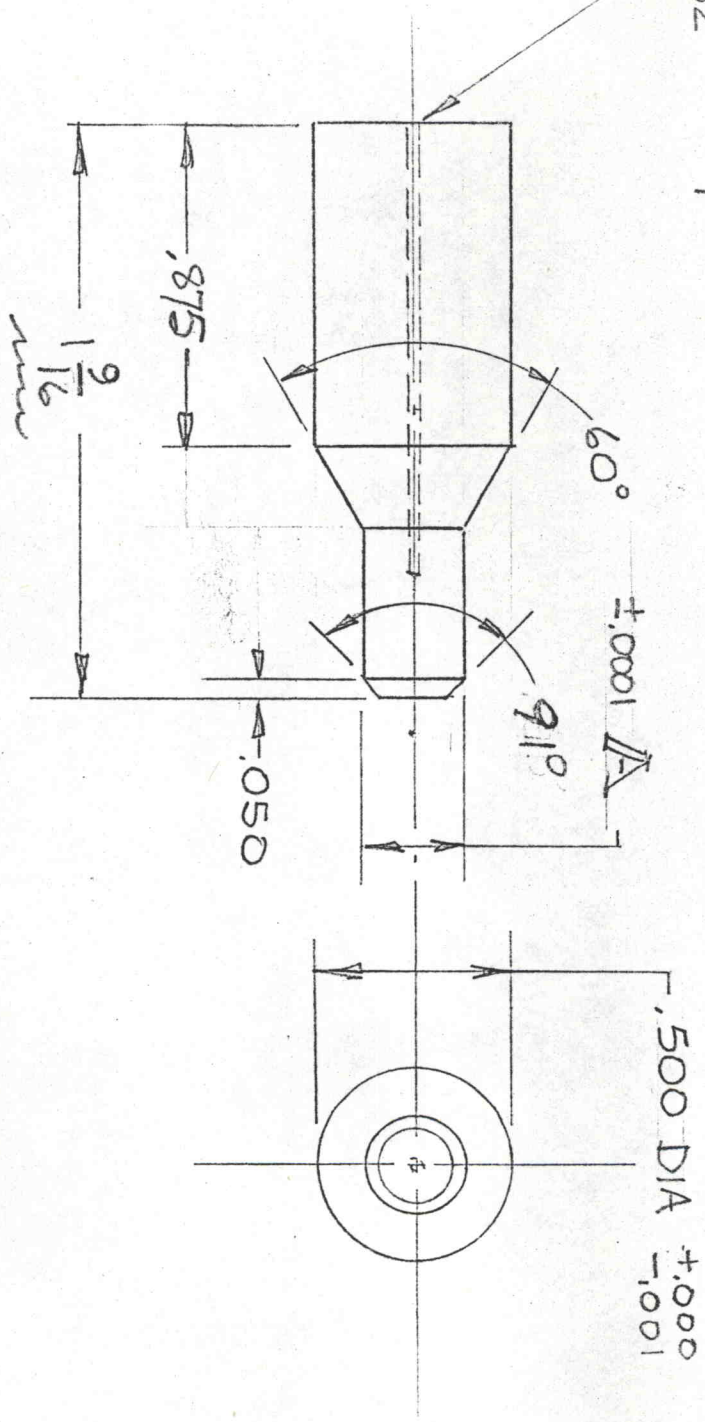
1 RQ'D.

6-24-74



(25) SCREW PLUG SPACER 1 REQ'D.
 SAE 1036 50 P.
 FULL SIZE 6-24-74

$\frac{1}{32}$ DR. $\frac{1}{4}$ DR.



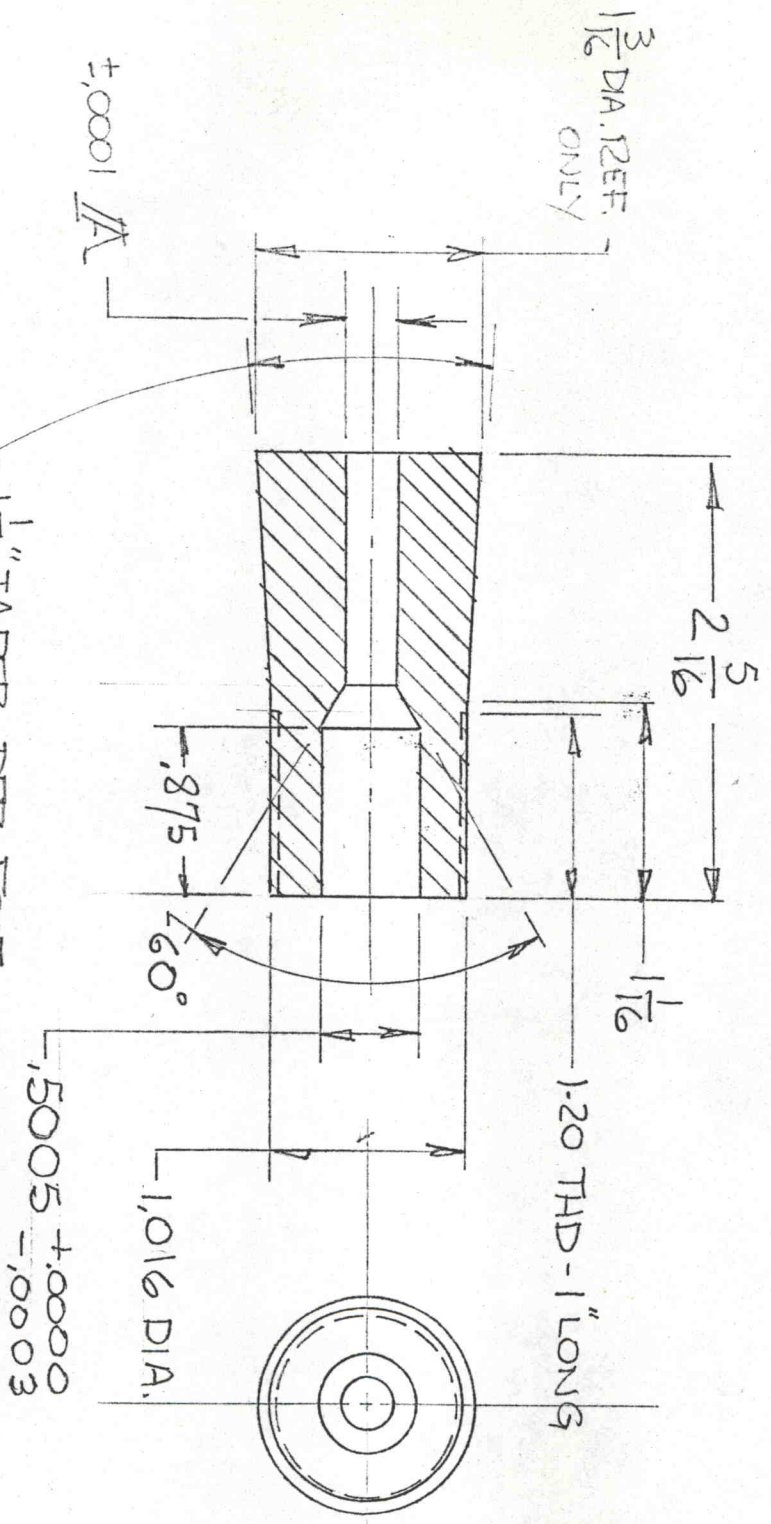
A	No	REQD
.250	2	
.265	6	

26

END PLUG
SAE 52100
TWICE SIZE

65 L.
6-24-74

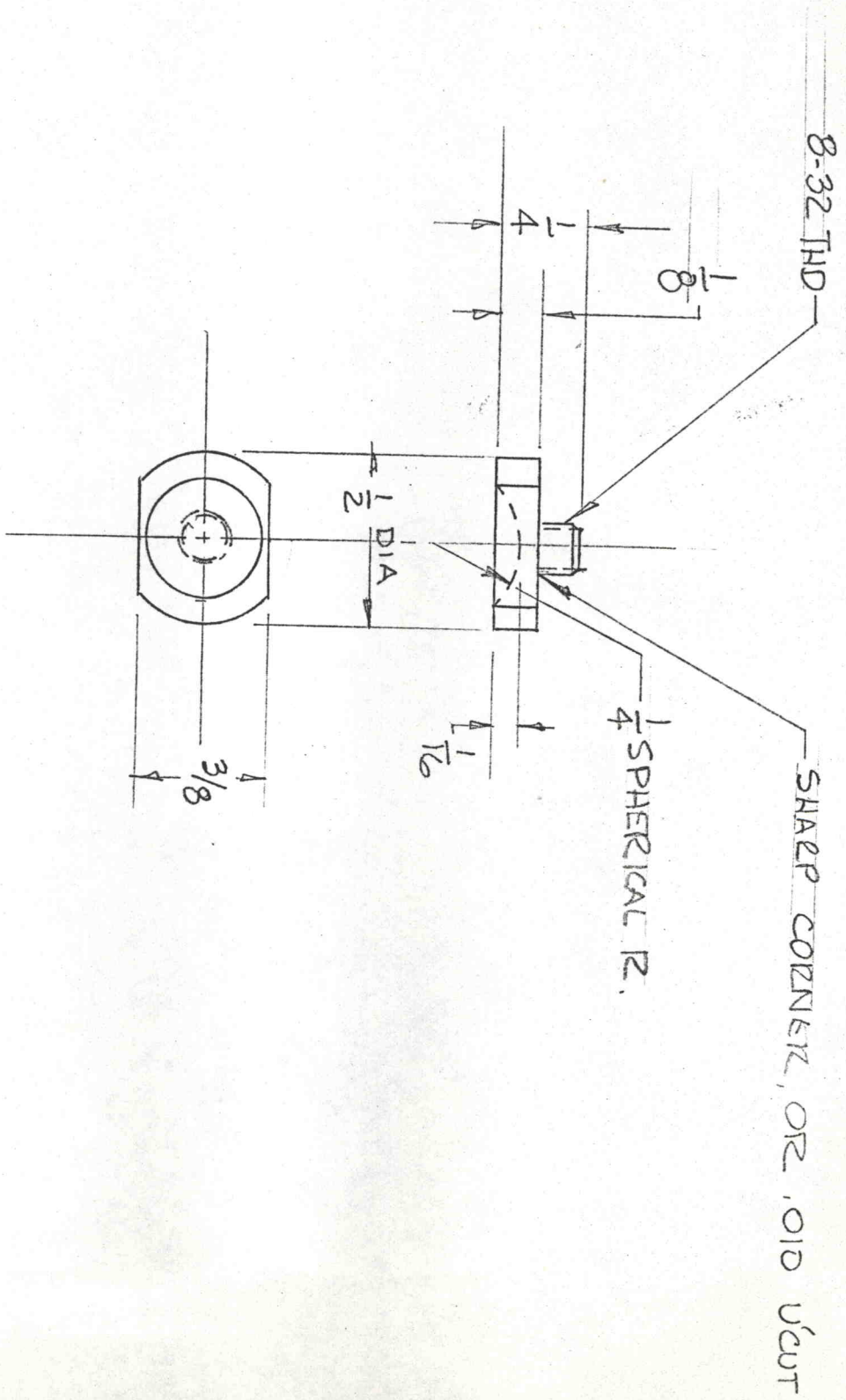
HEAT TREAT TO 1550°, WATER
 QUENCH, & TEMPER TO
 52/54 Rc.



1/4" TAPER PER FOOT
 DOUBLE ANGLE,
 GRIND AFTER HARDEN.

A	NO ROD
.2653	2
.2503	4

(27) STOPPER
 SOLAR STEEL
 FULL SIZE
 6-24-74



28 STYLUS PLATE 1 REQ'D
 STAINLESS STEEL
 TWICE SIZE
 6-27-74